

**Gardner
Denver**

POSITIVE DISPLACEMENT BLOWERS & VACUUM PUMPS

CycloBlower® H.E. Series



THE **Best**
Blower
WE HAVE
Ever MADE

It's all about the... **LEGACY**

The ORIGINAL Rotary Screw Blower

A Reputation Earned by a Proven History
of Quality, Reliability, and Performance

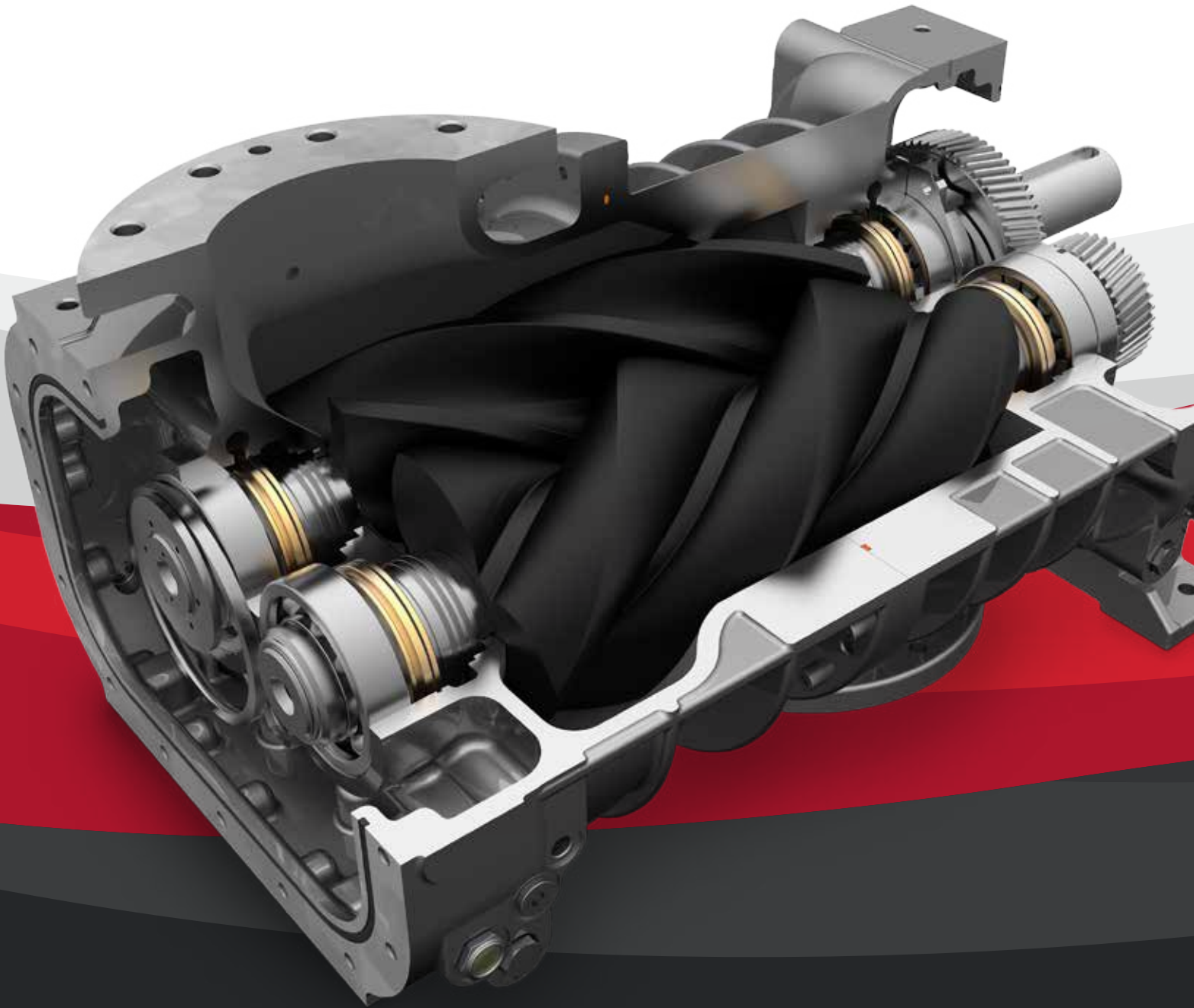




Experience Matters: Over 25,000
CycloBlower Installations World-Wide

It's all about the...

EVOLUTION

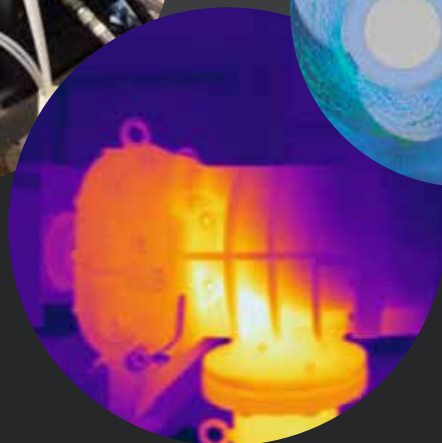
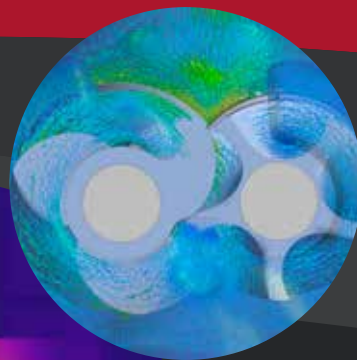


THOROUGHLY RESEARCHED | PRECISELY CALCULATED
CAREFULLY MODELED | METICULOUSLY TESTED | SUCCESSFULLY DEVELOPED

Introducing the CycloBlower H.E. Series

- Best-in-Class Energy Efficiency
- Game-Changing Patented Design
- New Level of Performance:
up to 36 psi, 22 inHg, 2650 cfm
- Built with Best-of-the-Best Components
- Flexible Options & Installation

CycloBlower has been reinvented
as the most efficient blower
on the market today



It's all about...

Saving Money

TOTAL COST OF BLOWER OWNERSHIP



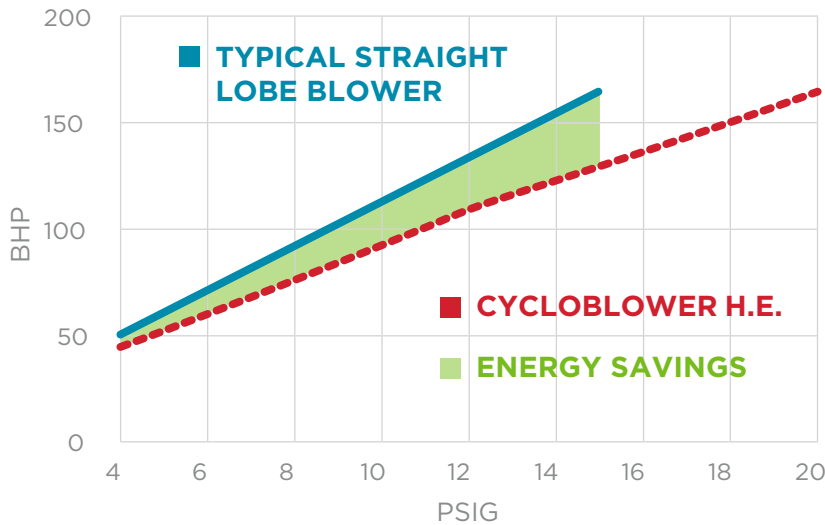
■ Energy
■ Maintenance
■ Investment

- Energy consumption is typically the largest cost of ownership
- Save BIG with best-in-class energy efficiency
- Lower your bottom line, increase your profits

*Invest Wisely =
Reduce Energy =
Save Money*



BRAKE HORSEPOWER REQUIREMENT COMPARISON at 2000 CFM



Innovation Working for You!

In many comparable applications, the CycloBlower operates more efficiently than other straight-lobe blowers. By requiring less brake horsepower (BHP) energy operating cost can be realized and greatly reduced.

CYCLOBLOWER H.E. VS. STRAIGHT LOBE

BLOWER TECHNOLOGY	BHP USED @ 15 PSI	ENERGY COST PER YEAR
Standard Straight Lobe	163	\$106,695
CycloBlower H.E.	129	\$84,604

\$22,090
 ANNUAL SAVINGS

*Calculations based on the cost of providing 2,000 cfm of air for 8760 hours (1 year of 24/7 operation) assuming motor drive efficiency of 90% and electricity cost of \$0.09/kWh.

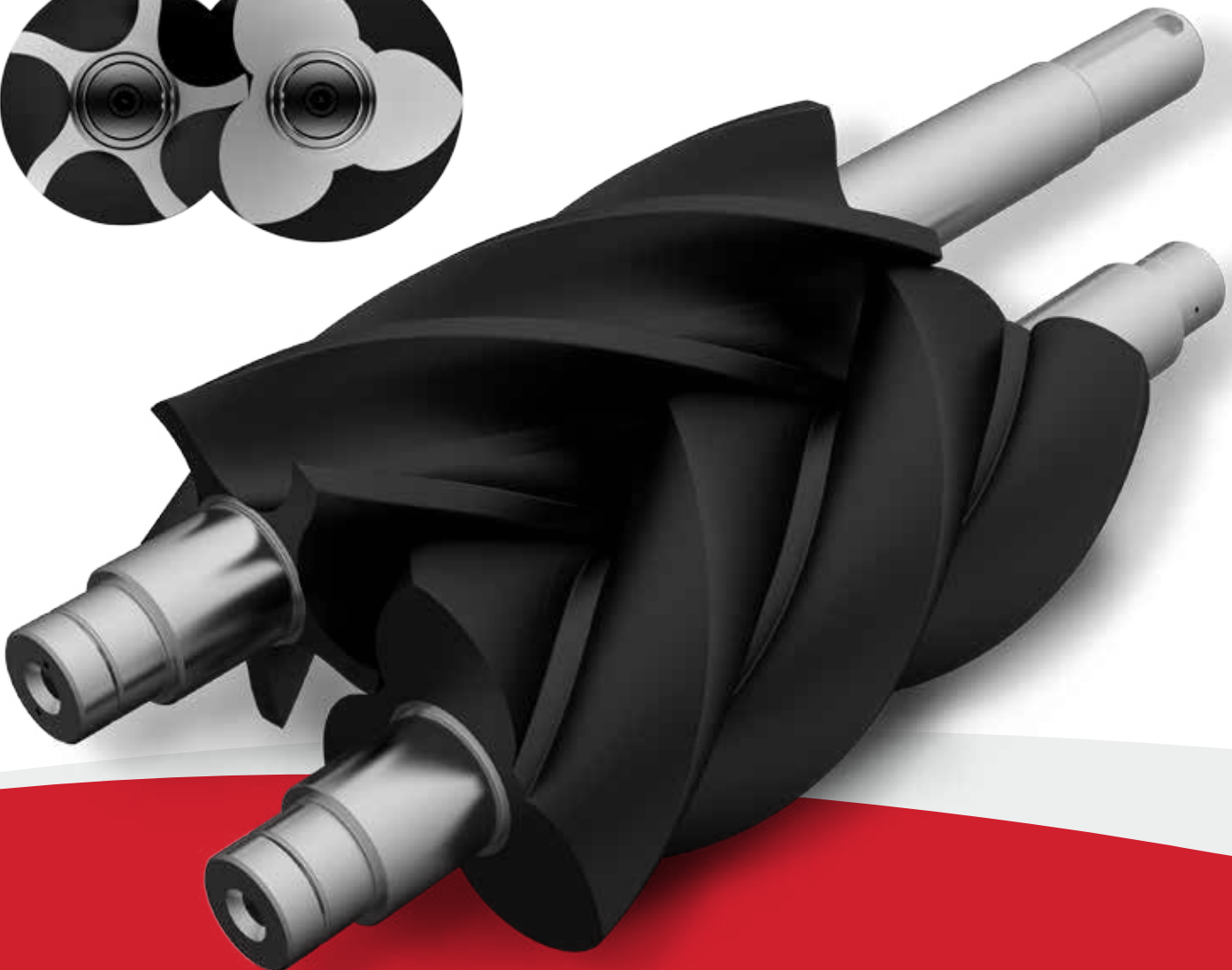
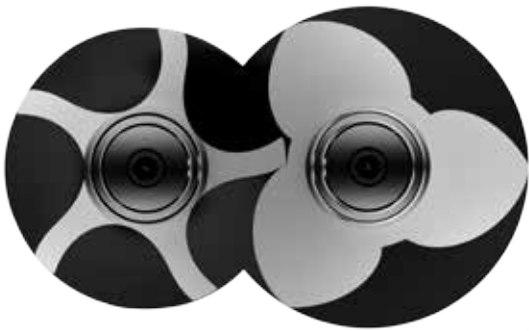


It's all about the...

patented DESIGN

Market-Leading Performance

- Patented, highly-efficient 3×5 helical screw rotor profile provides a competitive advantage for you
- Food-grade PTFE (Polytetrafluoroethylene) coated rotors minimize air loss while maximizing efficiency



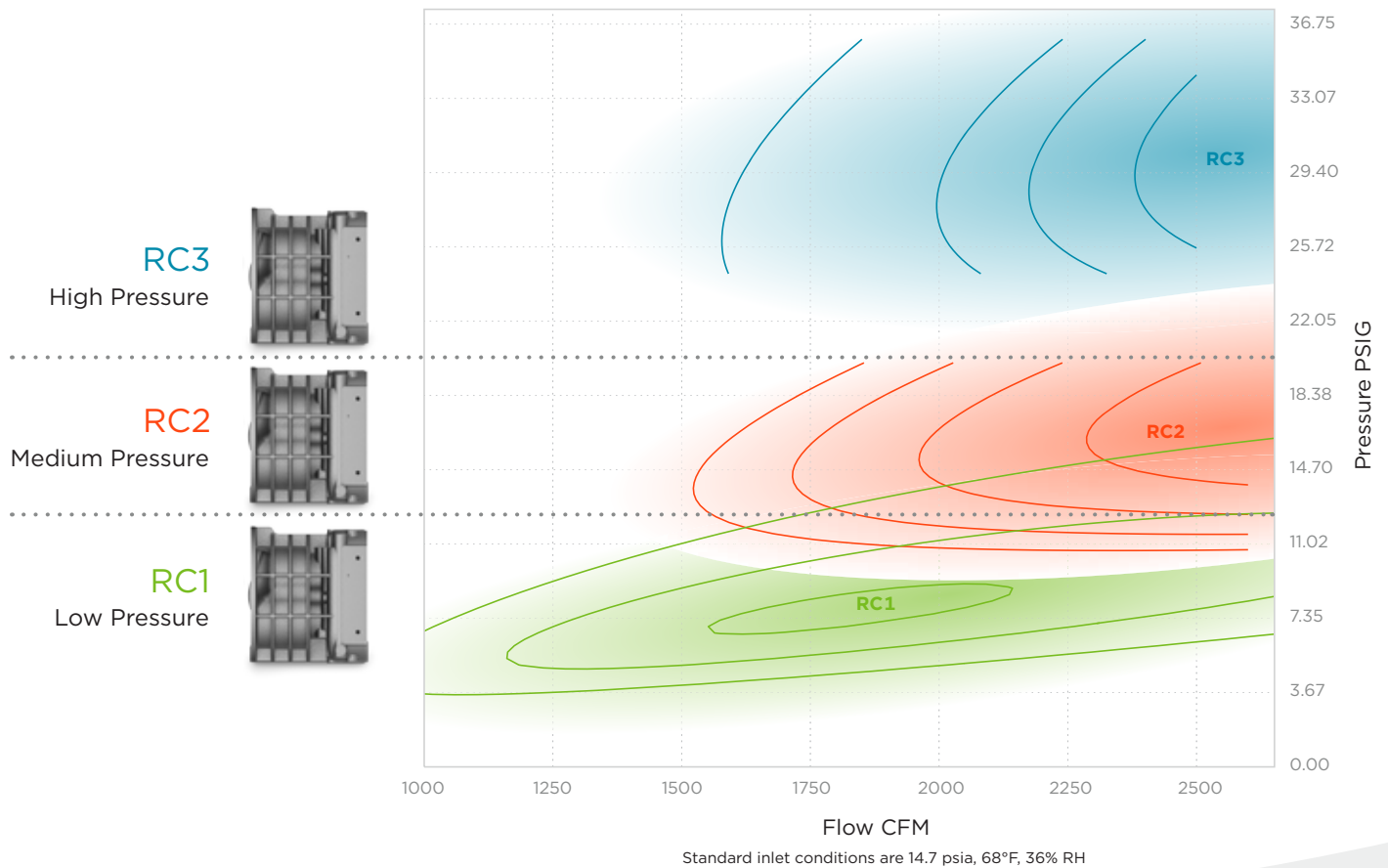
Enhancing Performance Through Innovative Design

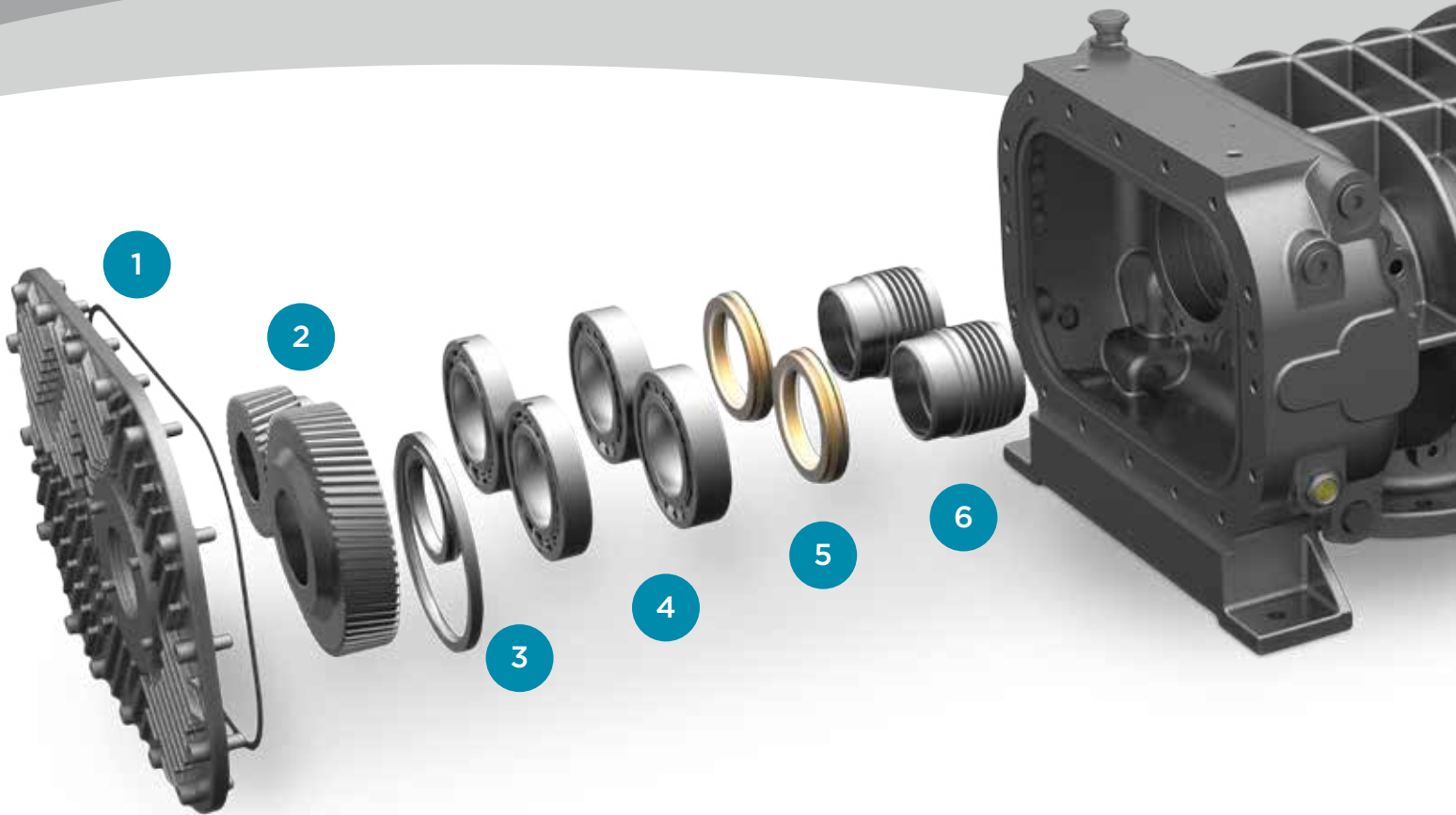
- Exclusive split-cylinder design matches performance to your application requirements
- Three discharge port options optimize efficiencies based on your specific performance needs



OPTIMIZED EFFICIENCY

Modified Cylinder for Maximized Savings



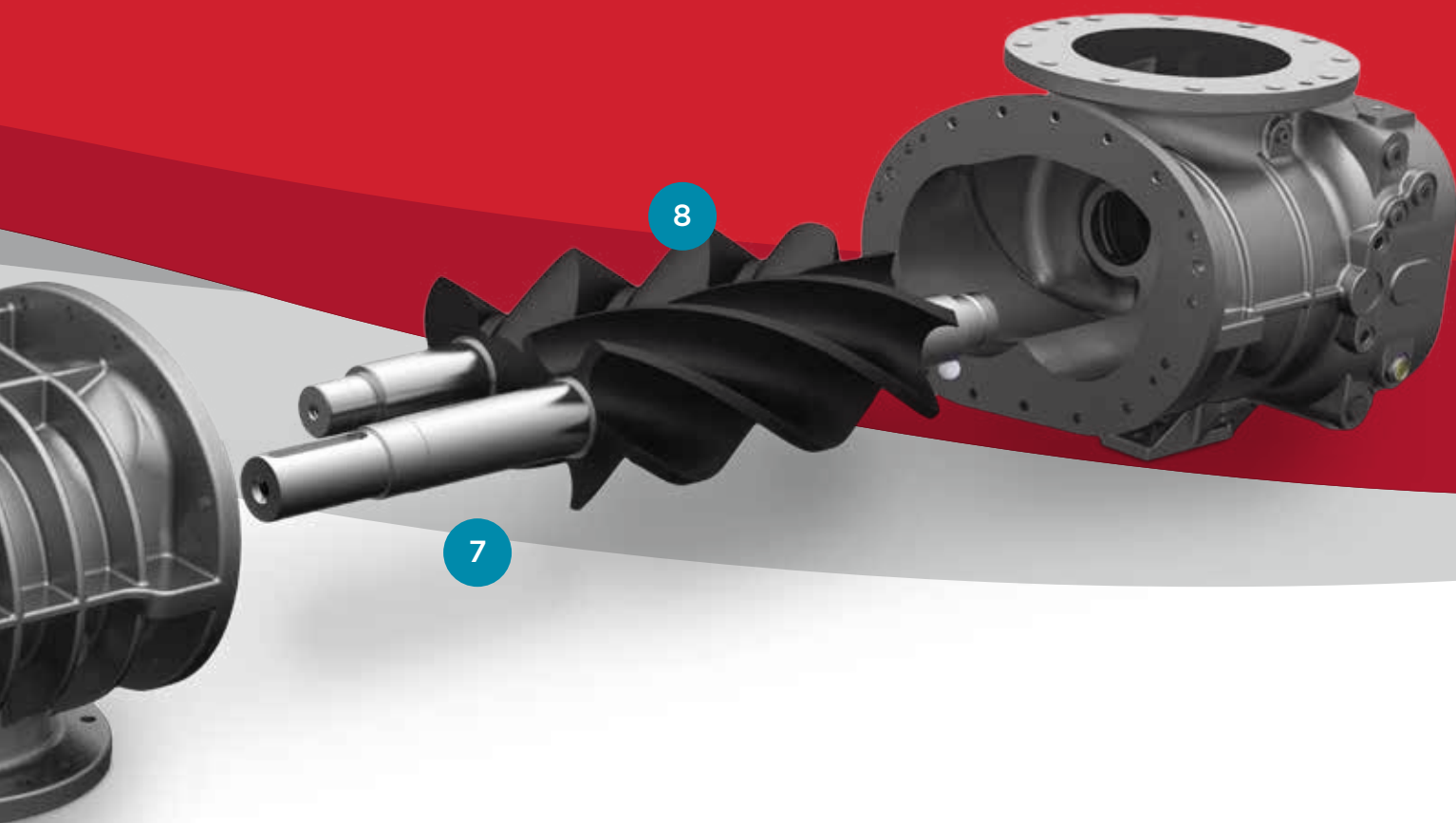


It's all about...

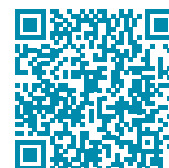
the COMPONENTS

BEST OF THE BEST

NO CORNERS CUT | NO COMPROMISE | PREMIUM PARTS
QUALITY CONFIDENCE | BEYOND EXPECTATIONS



To learn more about Inpro/Seal
visit www.inpro-seal.com or
scan the QR code to the right



1 O-Rings

- O-Ring Seals
- Durable Protection
- No Gaskets

2 Helical Timing Gears

- Smooth, Quiet Operation at All Speeds
- Assures Non-Slip Rotor Timing

3 Dual-Splash Lubrication with Eccentric Slinger Ring

- Unique Design
- Maximizes Efficiency by Reducing Power Consumption
- Optimizes Oil Distribution

4 Discharge Bearings

- Axial: 4 Point Angular Contact Bearings
- Radial: Cylindrical Roller
- Provides Absolute Strength and Stability on Multiple Planes to Handle Extreme Applications
- Extended Bearing Life

5 Inpro/Seal® Premium Oil Seal*

- Contactless Dual-Ring Design
- Non-Wearing
- Extends Longevity Reducing Maintenance Costs
- Market-Leading Protection Against Leaks

6 Piston Ring Air Seals

- Delivers Leak-Free Operation
- Provides Maximized Seal Life

7 Robust Ductile Iron Shaft

- Designed & Tested for Strength
- High Shaft Load Capacity
- Direct & V-Belt Drive Capable

8 PTFE (Polytetrafluoroethylene) Coated Rotors

- Food Grade
- Minimizes Air Loss
- Maximizes Efficiency

*Inpro/Seal is a registered trademark of Waukesha Bearings Corporation

It's all about...

OPTIONS

Force Feed Lubrication

- Ensures Cool Oil Temperature and Distribution
- Optional for Applications up to 20 psi
- Required for Applications Greater than 20 psi

working for your

APPLICATION

Sustainable Performance for a Wide Range of Applications



Wastewater Treatment



Pneumatic Conveying



Chemical Processing

Mechanical Seals

- For Gas Applications
- Interchangeable with Inpro/Seal

PTFE (Polytetrafluoroethylene) Coated Cylinder

- Minimizes Air Loss
- Maximizes Efficiency

Graphite Air Seals

- Required for High Pressure Applications Over 20 psi

Low, Medium & High Pressure Discharge Cylinder

- Optimizes Efficiencies
- Unique Technology

Installation Flexibility

- Top and Bottom Discharge Orientations
- 3 and 4 Mounting Foot Configurations Available
- ANSI or Metric Flanges

RTD Ports & Probes

- Designed to Ensure Precise and Accurate Bearing Temperature Measurements



Industrial Processing



Plastics Molding & Handling



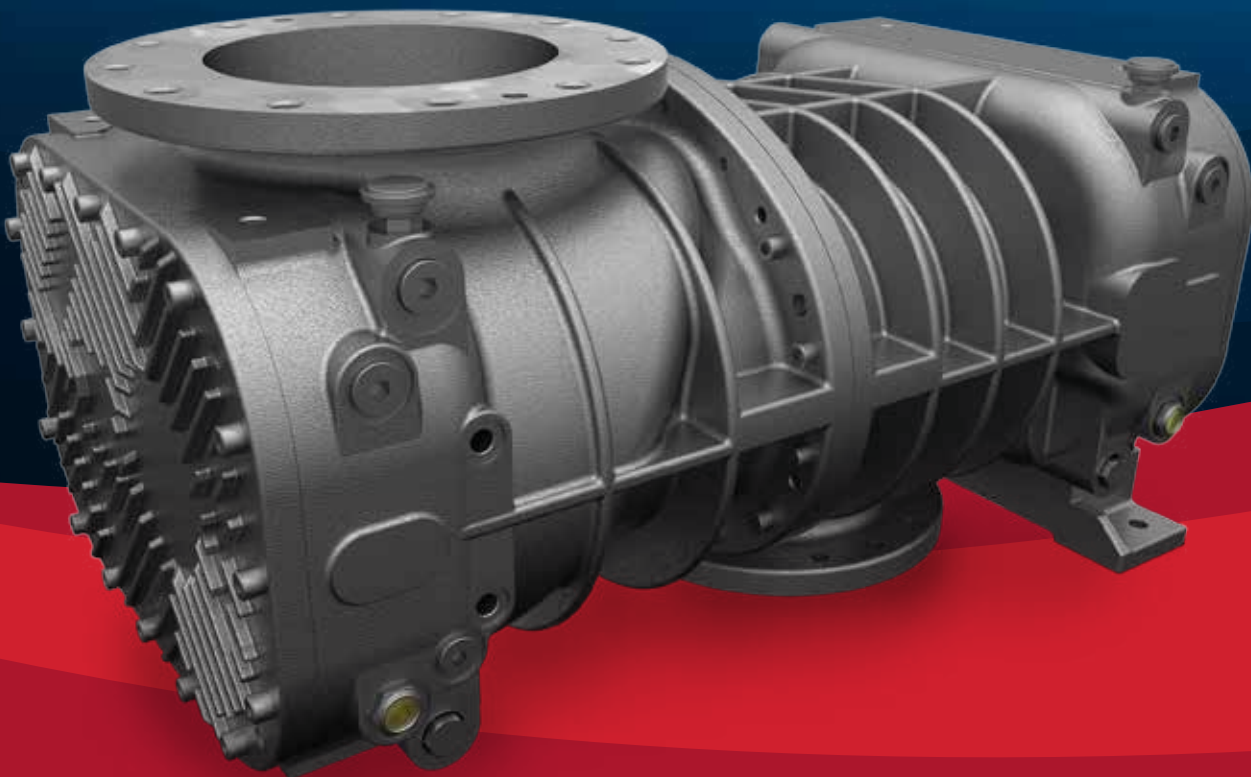
Food Processing


It's all about...

the INSTALLATION

As the **only rotary screw bare** blower on the market, the CycloBlower allows the flexibility to:

- Retrofit your existing package
- Package the way you want it packaged
- Upgrade your current package
- Maximize performance without maxing out your budget
- Compact footprint saves floor space





WE THOUGHT
OUTSIDE
OF THE BOX
TO SAVE MONEY
FOR YOU

DON'T WASTE MONEY ON CAPITAL EXPENSES
BY BUYING THE OVERPRICED, PREPACKAGED, INFLEXIBLE
UNITS. **CUSTOMIZE YOUR OWN PACKAGE** OR
RETROFIT YOUR EXISTING PACKAGE.

The leader in every market we serve
by continuously improving all business processes
with a focus on innovation and velocity

**Gardner
Denver®**

Gardner Denver, Inc.

1800 Gardner Expressway
Quincy, IL 62305
866-428-4890

www.gardnerdenverproducts.com



©2015 Gardner Denver, Inc. Printed in U.S.A.
PD-CB-HE 1st Ed. 9/15

 Please recycle after use.