



Vacuum Packages and Central Systems



What Defines Elmo Rietschle

Custom Engineered Solutions

Elmo Rietschle specializes in the engineering, design and fabrication of vacuum systems—from simple to complex. Years of application experience and knowledge of system design creates an end product that meets the very highest standards in performance and reliability.

Tailored Solutions to Application Requirements

Elmo Rietschle offers standard and customer vacuum system solutions. No matter your requirements, we can build it!

Widest Vacuum Technology in the Business

Elmo Rietschle offers the broadest pumping technology in the business. We offer Oil Lubricated, Non-Lubricated and Once-Through-Oil vane pumps. We also offer Contact-less equipment such as claw, screw, and liquid ring vacuum pumps and side channel, radial and rotary lobe blowers.

Flexible Configurations

Systems are designed around the customers application and are available in any configuration needed.



Preparing for Tomorrow's Challenges

Through continuous product design and thinking “out of the box,” we continue leading the way to tomorrow’s solutions.

All vacuum pumps are NOT created equal. Elmo Rietschle pumps regularly outperform the competition in operating noise levels, operating temperature, and achievable vacuum levels.



The Elmo Rietschle Promise

We understand your Application

When you buy from Elmo Rietschle, you're not simply buying a product. As our customer, you are investing in over a half-century of experience and application expertise that you can trust.

Full system design and fit for purpose

Our application engineers will review your application data for system requirement analysis. We will provide an engineered solution for your specific application needs.

System capacity up to 0.020 torr



Elmo Rietschle Chemical Systems

VSB Twister Systems

Applications

- Biogas and Biodiesel production
- Degassing
- Distillation
- Evaporation
- Extruder Venting
- Solvent Recovery
- Vacuum Stripping



Oil Free Operation

- Dry contact-less operation
- No lubricant in the pumping chamber
- No process contamination
- No pollution caused by the pump

Dual Pitch Design

Gasses are compressed at each pitch change and cooled before the next pitch change, resulting in greater efficiencies and cooler operating temperatures.

Low Operating Costs

Due to the unique dual pitch design it allows the pump to run at greater efficiencies with lower horsepower requirements.

Wide Performance Range

Pump capacities ranging from 47 to 1600 CFM and end vacuum to 0.020 torr. System capabilities are endless. We offer engineered solutions designed around specific applications.



Chemical Systems Application Guide

	Twister Pump	Liquid Ring	OTO	Steam
No contamination created by pump	✓	✗	✗	✗
No fluid disposal	✓	✗	✗	✗
No downstream filtration required	✓	✗	✗	✗
No expensive steam generation	✓	✓	✓	✗
Ultimate Vacuum to 0.020 Torr	✓	✗	✗	✗



Elmo Rietschle Claw Systems

Applications

- General Industry
- Hospital Vacuum
- Laboratory Vacuum
- Pneumatic Conveying
- Pick & Place
- Paper Converting
- Packaging

Contact-less

Elmo Rietschle Claw Vacuum Systems generates contact free vacuum.

- No Lubricant in the pumping chamber
- No process contamination
- No pollution caused by the pump

Maintenance

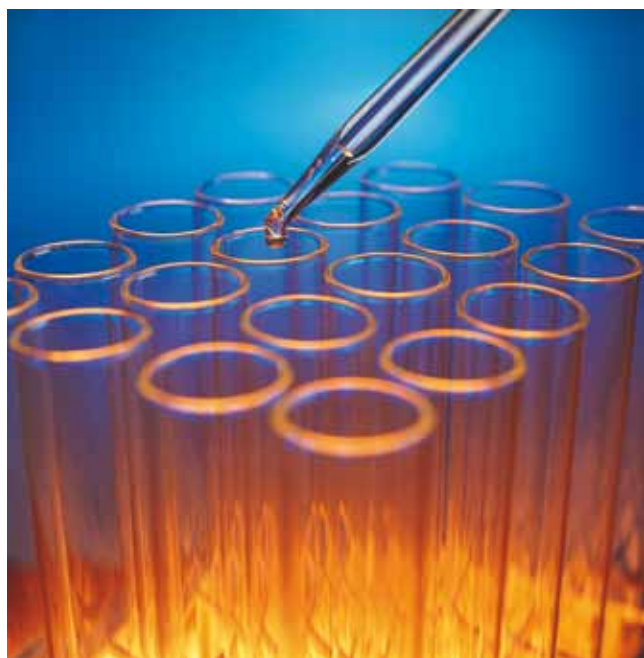
- There is no oil to change outside of the gear case.
- There are no vanes to replace creating less down time and maintenance expense!

Higher Efficiencies

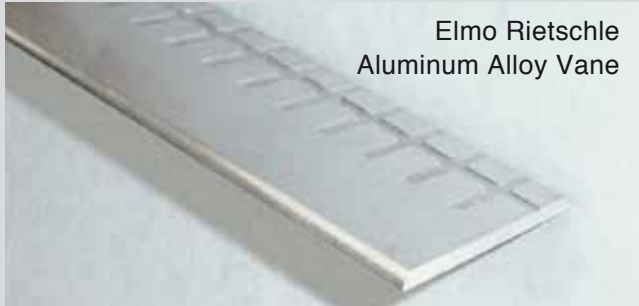
The claw design allows the system to run at greater efficiencies with lower horsepower requirements.

Wide Performance Range

Pump capacities ranging from 42 to 671 CFM and max vacuum to 27" Hg. System capabilities are endless. We offer engineered solutions designed around specific applications.



Elmo Rietschle Oil Flooded Vane Systems



Elmo Rietschle
Aluminum Alloy Vane



Industry Standard Phenolic Resin Vane



Best Vanes in the Industry!

- **Elmo Rietschle offers aluminum alloy vanes with a five-year warranty.**
- No phenolic resin vanes to break!
- Rietschle vanes do not wear and create particle mix with oil!
- No lost production time due to stuck vanes, vane failures!

Applications

- General Industry
- Centralized Vacuum Systems
- Drying
- Pneumatic Conveying
- Vacuum Hold Down

Wide Product Offering

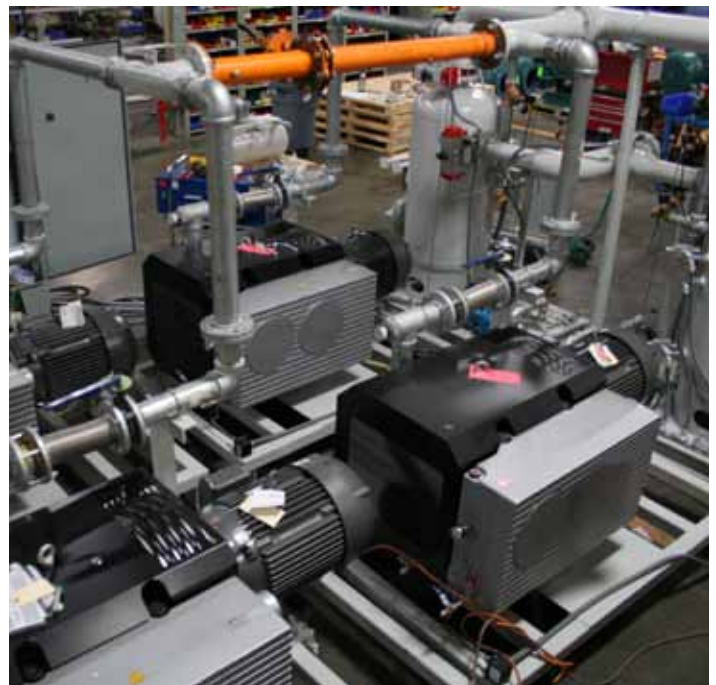
Elmo Rietschle offers the largest range of oil flooded vacuum systems for industrial applications.

Long Service Intervals

The oil and exhaust filters only need to be changed every 2,000 hours.

Wide Performance Range

Pump capacities ranging from 30 to 903 CFM and max vacuum to 29.92" Hg. System capabilities are endless. We offer engineered solutions designed around specific applications.





We are close to our customers
throughout the world.

- Corporate Headquarters
- ★ IPGA Headquarters
Marketing/Sales/Customer Service
- Sales/Service location
- Manufacturing location
- Distributor

Gardner
Denver®

www.elmorietschle.com

Gardner Denver, Inc. 1800 Gardner Expressway, Quincy, IL 62305
Telephone: 866-249-2275

